
**SOUTH DAKOTA SCIENCE AND TECHNOLOGY AUTHORITY
REQUEST FOR PROPOSAL**

RFP 2024-18

Ross Campus Bathrooms - Modular Restroom Enclosure

September 3, 2024

Questions Submitted: September 13, 2024 (by 5pm)
Questions & Answers Posted: September 20, 2024 (by 4pm)
Proposal Due Date: September 27, 2024 (by 3pm)

1. PURPOSE:

This Request for Proposal (RFP) is issued by the South Dakota Science and Technology Authority (SDSTA) for equipment procurement for a modular restroom enclosure that will be used as part of the Ross Campus Restroom project at the Sanford Underground Research Facility (SURF). An individual supplier will be selected for a fixed price purchase order based on the total of the quantities and unit costs listed on the project bid sheet, and overall supplied information package. Documents included with this RFP include:

A. SDSTA Design Documents

1. Attachment A: SINGLE & DOUBLE UNIT CONCEPTS. Conceptual sketch of a single and double unit restroom showing critical requirements that all proposals must meet or exceed to be considered for this RFP

B. Attachment B: SDSTA Bid Sheet

C. Attachment C: Draft Contract 2024-18

2. PROJECT BACKGROUND:

Currently restroom facilities for most of the underground footprint of SURF consist of portable toilet cassettes. Portable toilet cassettes allow the SDSTA to provide restrooms for the underground including remote areas that are not part of this project scope. However, these portable toilet cassettes are also used in higher traffic areas, like the 4850L between the Ross and Yates shafts. Using these cassettes in higher traffic areas create logistical issues relating to frequent trips to the surface to have the units emptied and cleaned. The SDSTA plans to phase out these portable toilet cassettes in higher traffic areas with standard flush toilets serviced by a compact wastewater treatment plant (WWTP) (Figure 1).

The primary location for underground science at SURF is the 4850 level. The 4850 level is split into three primary areas called the Ross, LBNF and the Davis Campuses. SURF is planning for the eventual need to support up to 250 SDSTA employees, researchers and contractors between these three lab areas on a temporary or permanent basis. Once a researcher/employee is underground, they generally do not come back to the surface until the end of the workday.

The restroom facilities around the Davis Campus lab spaces are furnished with flushing toilets that discharge into a small WWTP (Figure 1) that treats the waste before it enters the primary dewatering system. This system has been installed for over 4 years and is monitored by the SURF wastewater treatment plant operators.

The Ross and LBNF Campuses use standard portable toilets strategically placed throughout campuses to provide the underground population with restroom services. Once a week all portable toilets are checked, and the full ones are brought to the surface for cleaning by a local sanitary vendor. All cleaned toilets are then taken back underground to their previous locations. This method of operation works on a small scale but will become economically and logistically challenging as the underground population scales up to 250 people.



Figure 1. Davis Campus Wastewater Treatment Plant

To eliminate this time-consuming process, SURF will install a treatment system (not in this RFPs scope) similar to what's being used at the Davis Campus but on a larger scale. The plant will be installed underground in the Grizzly area (green square in Figure 2) at the Ross Campus and can service strategically placed modular restrooms (the focus of this RFP). The modular restrooms will contain flushing toilets and hand wash sinks to reduce the need for portable toilets in the SDSTA and LBNF spaces (Figure 2). An illustration is provided (Figure 3) showing how these restrooms will be used in this system.

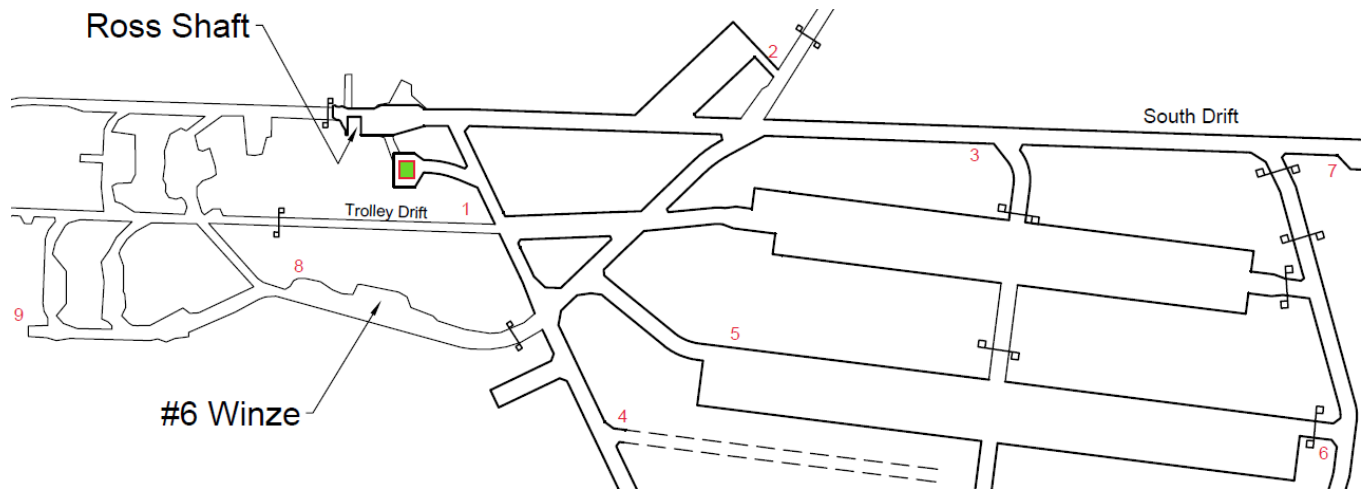


Figure 2: Treatment plant (green square) Possible Ross/LBNF Campus Modular Restroom

Locations 1-9

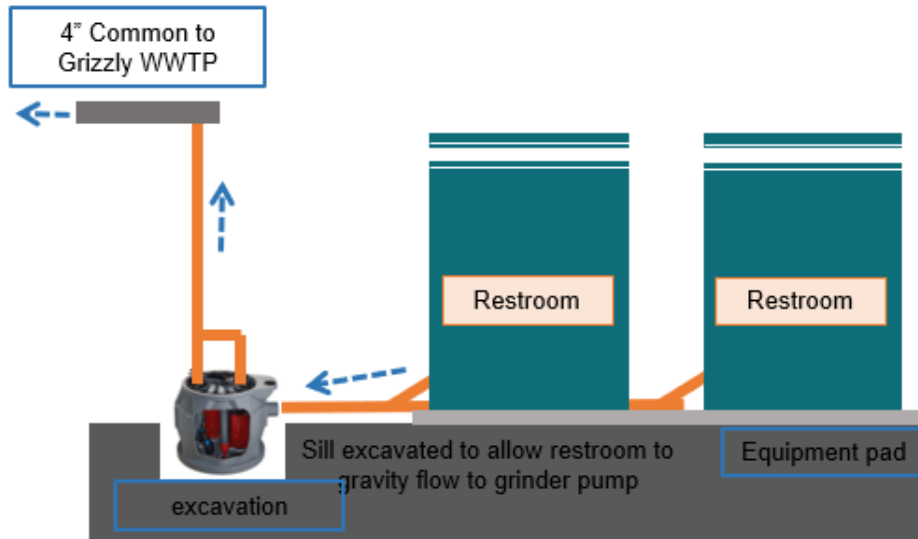


Figure 3: Treatment plant (green square) Possible Ross/LBNF Campus Modular Restroom Locations 1-9

3. EXISTING CONDITIONS:

The modular restroom(s) procured from this RFP will be installed at location 8 in the area near #6 Winze (Figure 1). A photo of the restroom location is provided to give bidders a general idea of the environment these enclosures will operate in.



Figure 1. Future modular restroom location near #6 Winze

4. SCOPE OF WORK:

With this RFP, SDSTA will initially purchase either 2 single unit restrooms (Single Unit Package) or 1 double unit restroom (Double Unit Package) with this RFP. One of these packages will be installed during the initial project construction. As demand increases, the SDSTA is interested in having the option to purchase additional future single unit restrooms (Optional Single Unit Package) & double unit restrooms (Optional Double Unit Package) up to one year from award that would be used for other locations.

The scope of work for this project is for Vendors to provide a proposal for restroom packages that meets or exceeds the requirements listed in the attached SDSTA restroom conceptual drawing/specifications (See Attachment A). Proposals must also include the items listed in the submission requirements below that help justify the submission. Proposals should be provided for the following equipment and services:

- 4.1. Single Unit Package
 - 4.1.1. Two - Single restrooms per Attch A
 - 4.1.2. Estimated Shipping
- 4.2. Double Unit Package
 - 4.2.1. One – Double restroom per Attch A
 - 4.2.2. Estimated Shipping
- 4.3. (Optional Single Unit Package)
 - 4.3.1. Same as Single Unit Package Above
- 4.4. (Optional Double Unit Package)
 - 4.4.1. Same as Double Unit Package Above

5. TECHNICAL EVALUATION CRITERIA:

A best value selection process will be used to award this contract. The selection criteria are listed below. Selection will be made based on tradeoffs between price and non-price evaluation criteria.

- a. The offeror's total project package compared to the technical requirements defined in Attachment A:
- b. Specialized experience and technical competence in:
 - Designing and manufacturing portable restroom enclosures

6. SUBMISSION REQUIREMENTS:

1) Submission Requirement: General

Proposals should be provided in digital format as a pdf file with standard letter size format. Proposals must contain the following:

- Locations (addresses) of the following:
 - Company headquarters
 - Nearest branch office
- Primary points of contact for the proposal.
- Any exceptions to the draft contract, terms and conditions, or other RFP

requirements.

2) Submission Requirement: Similar Projects

Describe at least three similar modular restroom projects that the bidder has supplied modular restrooms for within the past five years. Example projects should be for restroom enclosures used in harsh environments requiring the use of a forklift or crane for placement. Examples should note the customer, contact info (name, phone, email), location, and date of the project and extent of the services provided or length of the established relationship.

3) Submission Requirement: Equipment Spec Sheet & Technical Data

Provide manufacturer specifications/equipment data sheets/conceptual layouts and information that provide enough detail to justify that the modular restroom enclosure will meet or exceed the specification in this document and that the overall size & weight of each major component will not exceed the limits listed in the SDSTA design documents. Supplied spec sheets and information shall include:

- Brochure information for the supplied restroom enclosure
- Conceptual general arrangement drawing of the supplied package showing all equipment and overall dimensions.
- Estimated weights of the enclosures.

4) Submission Requirement: Quality Control and Testing

Provide a description of the QC and testing programs used during the manufacturing of the modular restroom to ensure the product meets the operational requirements. QC and testing manuals will not count toward the 30-page limit.

5) Submission Requirement: Schedule

Proposed schedule/work plan. Offerors shall provide the basic schedule, outlined below, and specific number of calendar days required for project completion after Notice to Proceed (NTP) on Attachment B (SDSTA bid sheet):

- Shop drawing approval/order que time
- Manufacturing
- Shipping (estimated)
- Project Complete (total days)

Total days will be used to establish the contract completion date.

7. DELIVERABLES:

Refer to this document and the technical specifications for deliverables required after contract award. While not a complete list, key deliverables include:

- Selected Modular restroom package
- Quality Control & Testing Programs
- Shop Drawings
- Test Reports

- As Built Drawings (if applicable) or updated spec sheets
- O&M Manuals and Warranties
- Critical spare parts list that includes itemized pricing, availability, and estimated delivery times.

8. PROPOSALS DUE:

Offerors should submit an electronic copy (pdf format) of the proposal no later than 3pm on September 27, 2024, to bbrack@sanfordlab.org. Late submissions will not be accepted.

Questions are due by 5pm on September 13, 2024.

Questions/Answers will be emailed to all prospective bidders and posted to the sanfordlab.org website no later than September 20, 2024.

The proposal period may be extended at the discretion of SDSTA based on the quantity and/or complexity of questions. Any notices of extension of time to respond will be distributed to all prospective offerors by SDSTA.

All communications regarding this procurement between RFP release and award shall be directed by email to bbrack@sanfordlab.org. Communications with other SDSTA staff regarding this procurement in advance of the award are not allowed.