

SOUTH DAKOTA SCIENCE AND TECHNOLOGY AUTHORITY
RFP 2025-07
4850L Restroom Pipe Network
Amendment #1

SDSTA amends the subject RFP to include the scope of work below:

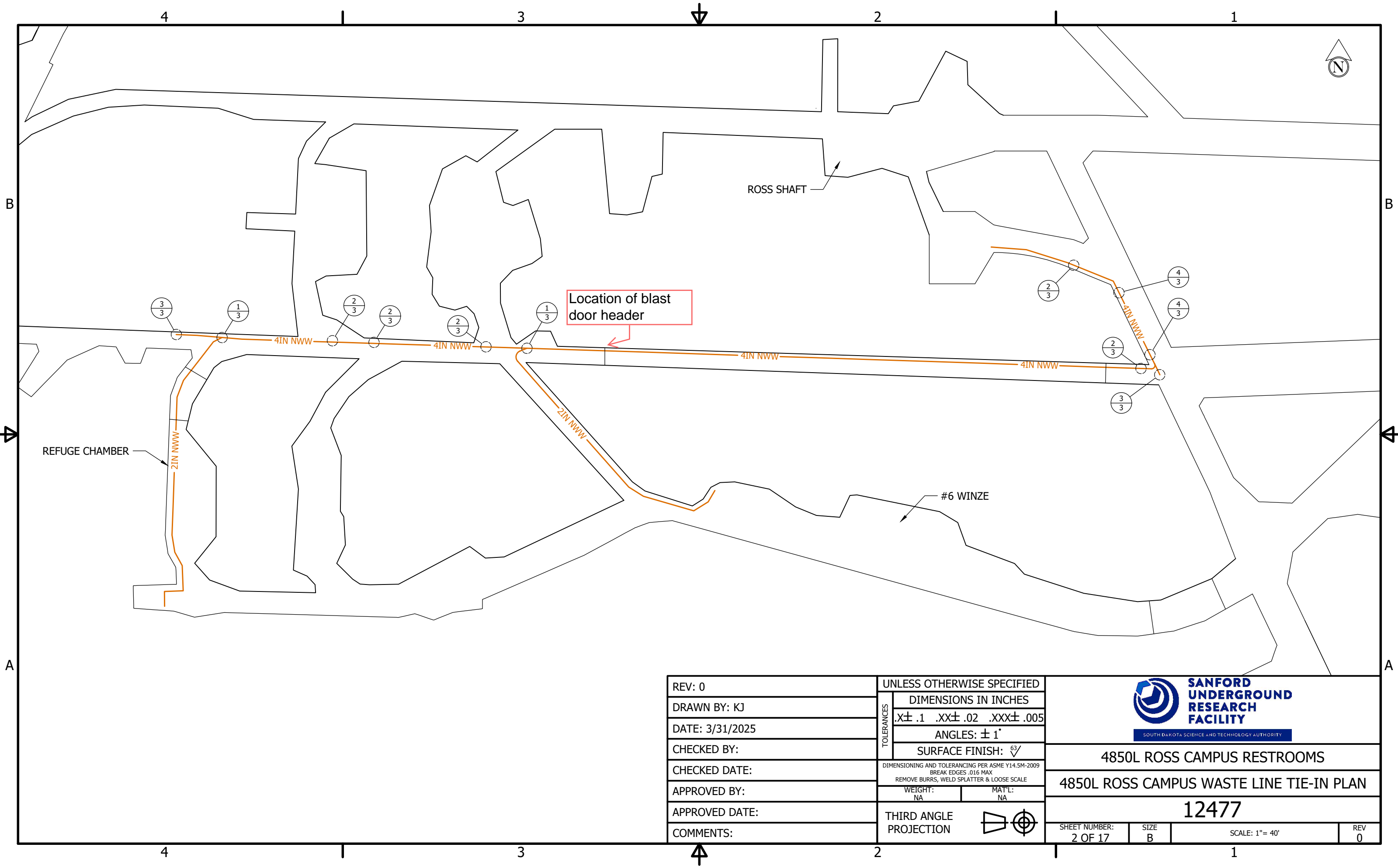
During a post bid project walk-through, SDSTA determined that the remaining blast door frame header is in the direct path of the waste line that will be secured to the existing Unistrut in this area, along with some missing Unistrut sections. SDSTA will replace the Unistrut sections around the blast door frame, but the contractor will be responsible for the following:



- Contractor to core drill through the blast door header (drawing and photos below) with enough clearance to allow the 4" HDPE pipe to pass through.
 - Noted on the drawing - the header is 18" thick concrete, #7 bars @ 12" O.C EW EF with 1-1/2" cover & #4 shear ties @ 12"
 - Contractor to provide all equipment and labor

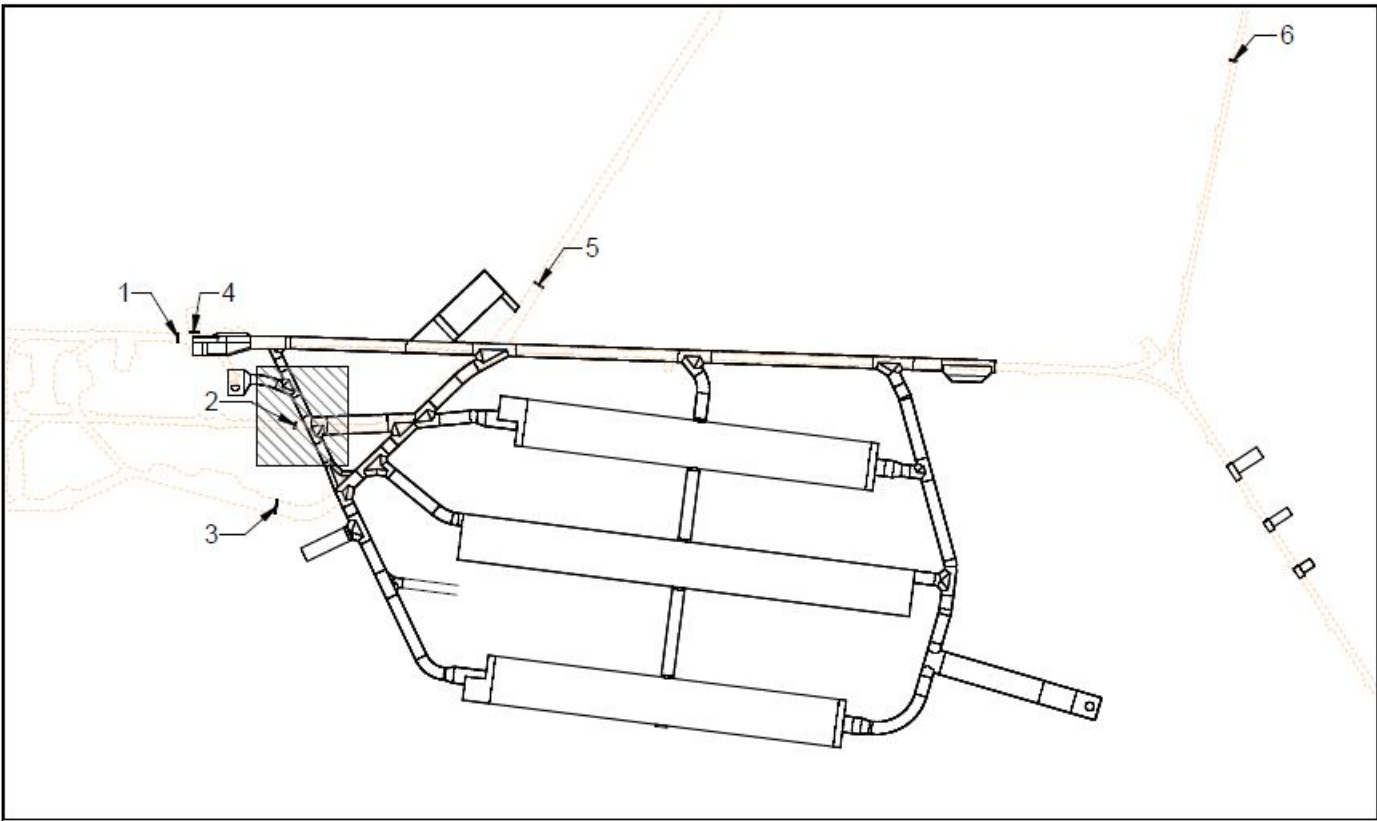
When the contractor is working in the shotcrete areas, the contractor shall provide a means to capture the dust created when drilling the anchors into the rock. For more detailed information on what is currently being used, and the installation process in general in the shotcrete areas, please contact Glen Tonack 1-402-206-8933. Glen is one of the individuals responsible for overseeing the installation of anchors in the shotcrete for another project in the area.

It is hereby understood that all other provisions will not be otherwise changed nor affected.

This Amendment is effective June 23, 2025.

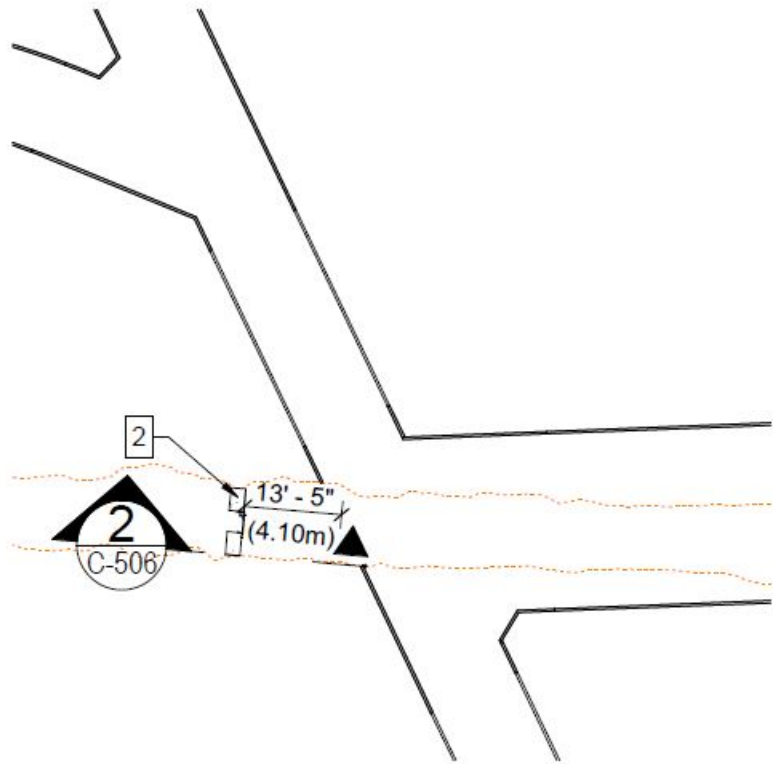


REV: 0	TOLERANCES		UNLESS OTHERWISE SPECIFIED		<div>SANFORD UNDERGROUND RESEARCH FACILITY<div>SOUTH DAKOTA SCIENCE AND TECHNOLOGY AUTHORITY</div></div>			
DRAWN BY: KJ			DIMENSIONS IN INCHES					
DATE: 3/31/2025			.X± .1 .XX± .02 .XXX± .005					
CHECKED BY:			ANGLES: ± 1°					
CHECKED DATE:			SURFACE FINISH: $\sqrt{\hspace{1cm}}$		4850L ROSS CAMPUS RESTROOMS			
APPROVED BY:	DIMENSIONING AND TOLERANCING PER ASME Y14.5M-2009 BREAK EDGES .016 MAX REMOVE BURRS, WELD SPLATTER & LOOSE SCALE				4850L ROSS CAMPUS WASTE LINE TIE-IN PLAN			
APPROVED DATE:	WEIGHT: NA		MAT'L: NA		12477			
COMMENTS:	THIRD ANGLE PROJECTION				SHEET NUMBER: 2 OF 17	SIZE B	SCALE: 1"= 40'	REV 0



KEY PLAN

SCALE: 1" = 200'-0"



PLAN VIEW

SCALE: 1" = 20'-0"

NOTES:

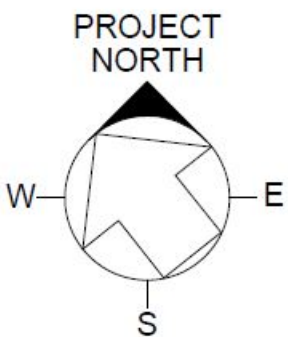
- FOR GENERAL NOTES AND ABBREVIATIONS REFER TO DRAWING UG-FD-C-002
- REFER TO SECTION 08 39 30 FOR BLAST DOOR SPECIFICATION.
- BLAST DOOR SHALL BE EQUIPPED WITH OUTSIDE OPERATOR SO THAT DOOR CAN BE OPENED FROM EITHER SIDE.
- EXISTING RAIL AT BLAST DOOR LOCATIONS WILL BE REMOVED PRIOR TO BLAST DOOR INSTALLATION SO DOOR FRAMES DO NOT NEED TO ACCOMMODATE RAIL PENETRATIONS.
- FINAL LOCATION OF THE DOOR TO BE DETERMINED BASED ON OBSERVATIONS IN THE FIELD.
- BLAST DOORS SHALL BE INSTALLED AS POUR IN PLACE AND IN A POSITION WHICH OPENS OUTWARD AGAINST THE INCOMING PRESSURE PULSE.
- ALL CONCRETE FOR DOOR EMBEDMENT SHALL HAVE 5000 PSI COMPRESSIVE STRENGTH.
- THE MINIMUM NUMBER OF HORIZONTAL AND VERTICAL REINFORCING BARS SHALL BE ONE (1).
- DOOR DETAILS SHOWN ARE INDICATIVE. ACTUAL DOOR DESIGN AND SHOP DRAWINGS SHALL BE UNDERTAKEN BY THE SUPPLIER AND APPROVED BY THE FRA PRIOR TO FABRICATION AND INSTALLATION.
- CUT BAR REINFORCEMENT LENGTHS TO SUIT EXCAVATION PROFILE.
- ALL STRUCTURAL STEEL SHAPES AND PLATES SHALL BE FABRICATED FROM ASTM A36 STEEL.
- CENTER ROCK DOWELS IN CONCRETE WALL. ROCK DOWEL LENGTHS SHALL BE AS REQUIRED TO SUIT MINIMUM EMBEDMENT, EXCAVATION PROFILE, AND DOOR GEOMETRY.
- FOR TYPICAL REINFORCING AND PIPE/DUCT PENETRATION DETAILS, REFER TO UG-FD-SS-701.
- DOOR 2 SHALL BE RETAINED FOR THE PERMANENT FACILITY.

REV.	DATE	DESCRIPTION
4	05/03/19	100% FD SUBMISSION
3	02/08/19	90% FD SUBMISSION
2	11/02/18	60% FD SUBMISSION
1	07/13/18	30% FD SUBMISSION

ARUP
Arup USA Inc
77 Water Street, New York NY 10005, T 212 898 3000
www.arup.com

McMILLEN JACOBS ASSOCIATES

srk consulting

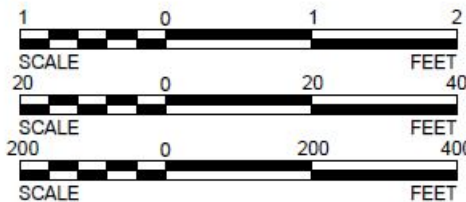


SCALE:

1"=1'-0"

1"=20'-0"

1"=200'-0"



Fermilab
Long-Baseline Neutrino Facility

DESIGNED	SP	ARUP
DRAWN	ES	ARUP
CHECKED	JH	ARUP

LBNF - FSCF - EXCAVATION

4850 LEVEL

BLAST DOOR DETAILS DOOR 2-TROLLEY DRIFT

DRAWING NO. **15-1-6F** **UG-FD-C-507**

REV. **4**

NOT FOR CONSTRUCTION

5/3/2019 7:35:59 PM

08/26/15

05/03/19



