

Q&A for RFB #28490 Yates Fabricated Component

1. Are there any finishes required?

- No

2. Could the tolerance for the length of the Guide Clip and Wall Plate Stiffener be opened up to +/-0.125" from the 0.05" in the title block

- Yes, an 1/8" on the length is fine

3. Can you share a STEP file of the raggle pin or provide further detail on the 1"x1/8" "raggle" cuts? The drawing is not very clear at showing the shape of the cut and type of end mill needed for this process.

- I agree, the drawing is a bit difficult to read, but cuts are a single 45-degree angle on each quadrant. (drawing has hidden lines shown). These can be put in with a grinder or a press.

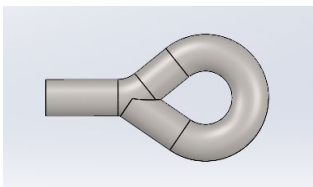
4. What are the payment terms if invoices are submitted by the 3rd of each month?

- NET15/Checks issued on the 15th.

5. If we delivered monthly, the first shipment would have to be received by January 31 for the project to kick off, correct?

- Correct. Early delivery is acceptable.

6. The eye on the Raggle Pin may need to be more of a tear drop shape due to the bending process. I need a small section to beginning and end of the bend. See below.



- This would be fine if the inner diameter is held at 2" + 0.25" / - 0.00". Full Penetration weld.

7. What is the purpose of drawing #12487 Raggle Pin?

- It will be placed in a drilled hole in the rock and grouted in place as the anchor point for the turnbuckle to support the shaft set.

8. Can #12487 Raggle Pin be made out of rebar that is of the same diameter?

- Yes.

9. What hole size do you drill for #12487 Raggle Pin?

- 1-5/8"