



**SANFORD
UNDERGROUND
RESEARCH
FACILITY**

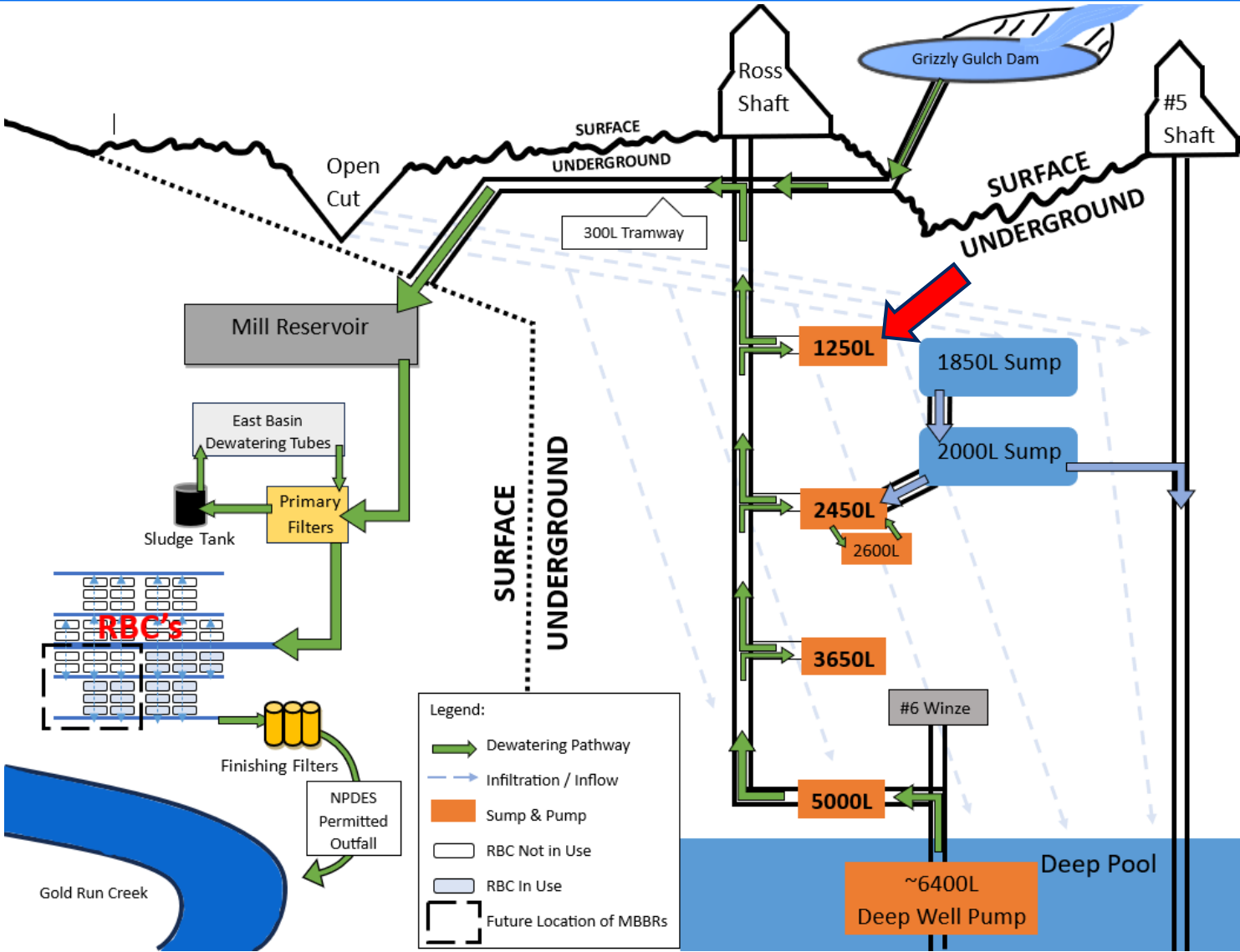
1250L Pump Room Rehab

- *Work Area and General Info*

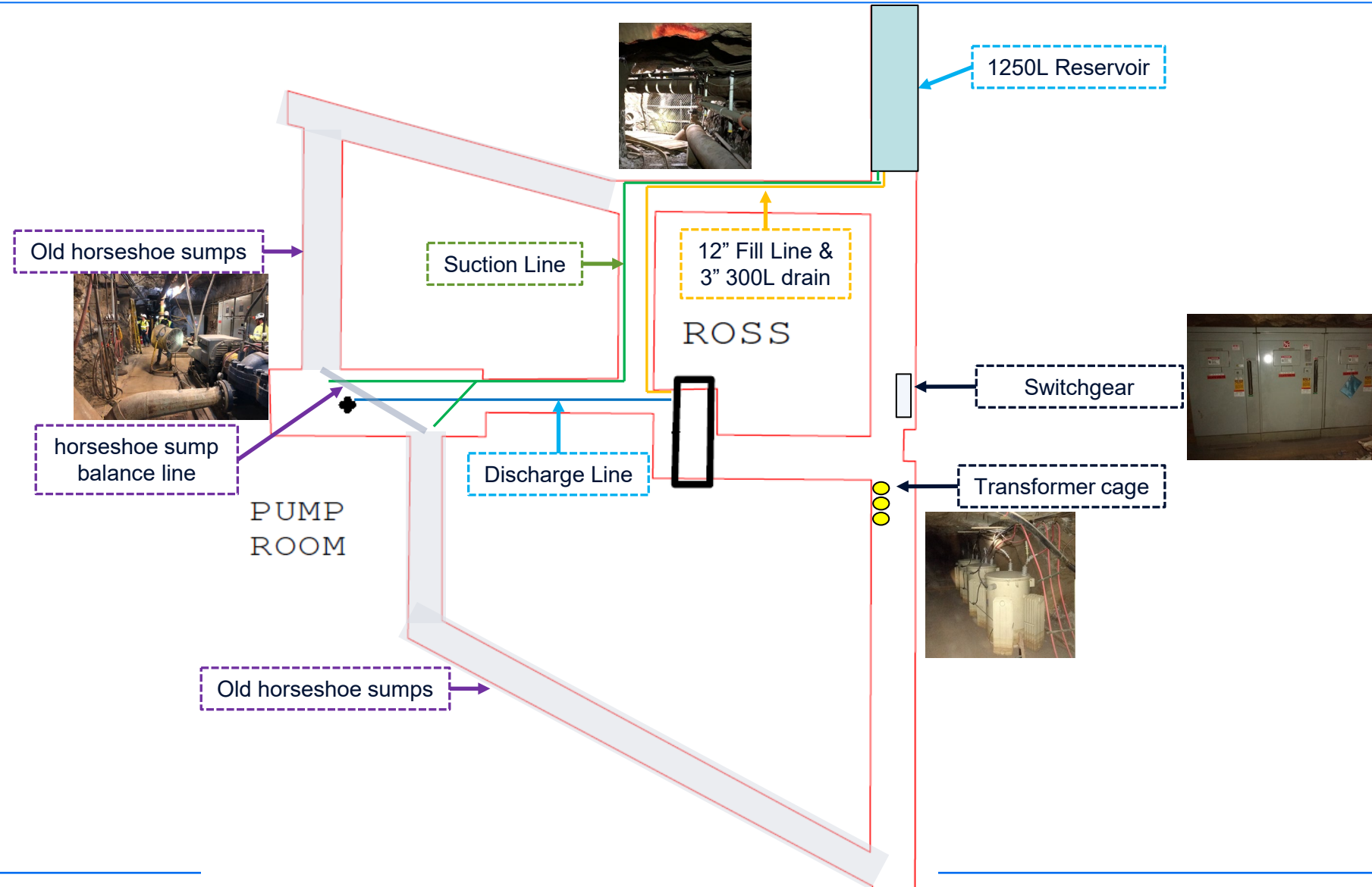
SDSTA Dewatering System

- The Dewatering System at SDSTA is responsible for removing and treating all the natural water inflows that accumulate underground
- Without this system natural water accumulation underground would continue to rise eventually overtaking the lab spaces and levels

Dewatering Statistics	Gallons Pumped
Pumped Yearly Average	348 Million
Treated Yearly Average	601 Million
Total Discharge (since 2008)	10.2 Billion



1250L Pump Room Fill & Discharge Lines



1250L – Station & Transformer Cage



1250L Station Switchgear



1250L Station 12KV Transformer
Cage Fuse Disconnect

1250L Station 12KV Transformer
Cage Fuse Disconnect



Inside Transformer Cage



1250L – Station and Switchgear



1250L – Pump Room



1250L – Pump Room



1250L – Reservoir and Drift Piping



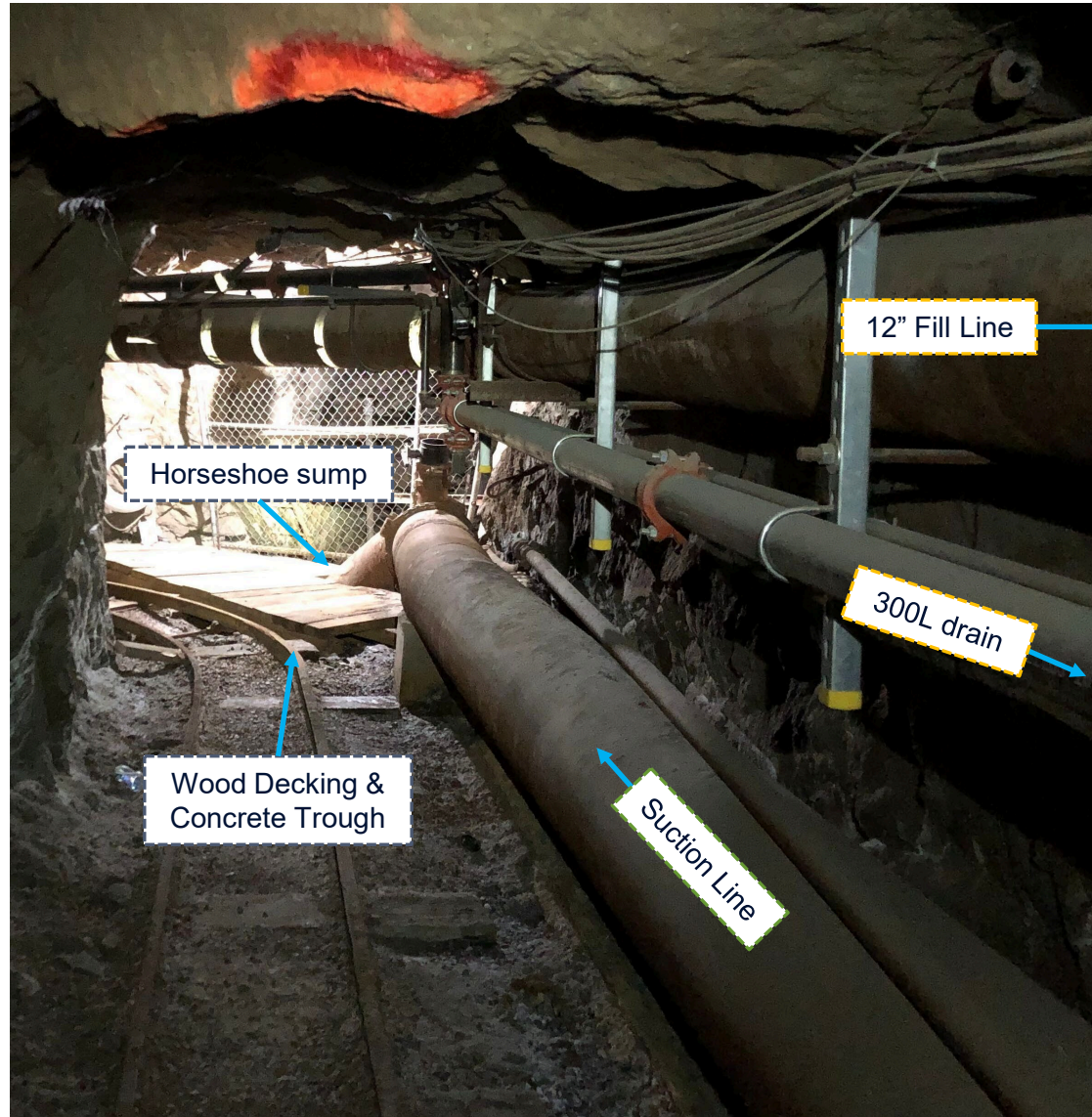
1250L – Drift Piping



1250L – Drift Piping



1250L – Pump Room Drift Piping



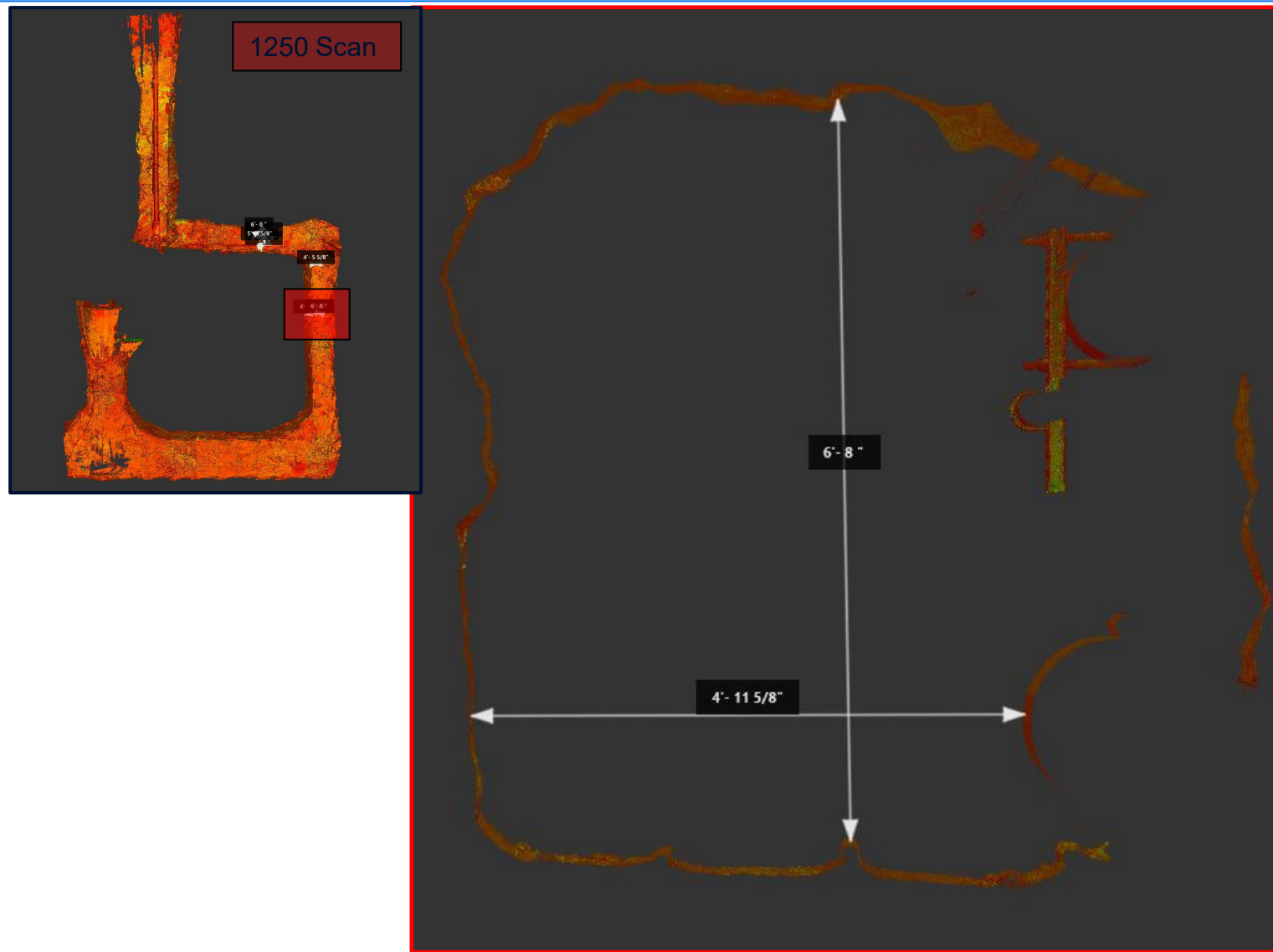
1250L – Tight Areas (before demo)



Height Clearance*	
Item	Measurement
Track to Pipe	53.625"
Flat deck car	- 13.625"
Clearance	- 1"
Max Load Height	39"



1250L – Tight Areas (before demo)



Offeror Parking: Shuttle Route and Designated Parking

