



**Sanford Underground
Research Facility
Foundation**

2022 Annual Report

**Supporting the advancement of
world-class science and inspiring
learning across generations.**

The Sanford Underground Research Facility's (SURF) primary mission is "to advance world-class science and inspire learning across generations."

To carry out that mission, SURF creates and delivers educational programming that encourages students to ask questions and find solutions. We host events designed to generate community interest in scientific discovery and invite collaboration among researchers.

As the philanthropic arm of SURF, the Foundation builds strong relationships around the globe and opens doors for public and corporate contributions to support the mission.



Staff

Priscilla Romkema
Interim SURF Foundation Director

Mike Headley
SDSTA Executive Director
mheadley@sanfordlab.org

Board of Directors

Ms. Julie Olson
Chair, Spearfish, SD

Mr. Adam Gollofon
Board Member, Bozeman, MT

Mr. Fred Romkema
Vice Chair, Spearfish, SD

Ms. Sandra Stash
Board Member, Whitefish, MT

Ms. Beth Massa
Secretary-Treasurer, Rapid City, SD

Dr. Barbara Szczerbinska
Board Member, Corpus Christi, TX

Mr. Linn Evans
Board Member, Rapid City, SD

Mr. Justin Varland
Board Member, Bend, OR

Dr. Chris Fall
Board Member, Arlington, VA

Dr. Robert Wilson
Board Member, Fort Collins, CO

Ms. Aurelia Giacometto
Board Member, Spearfish, SD

Mr. Casey Peterson
Ex-Officio, Rapid City, SD

Message from the Chair



The Sanford Underground Research Facility Foundation experienced a year of change and growth in 2022. Through your generosity, we continued to build upon our formal and informal education and outreach programming; finalized the design of Čanglěška Wakhán, the ethnobotanical garden at SURF; and expanded our internship and Davis-Bahcall Scholars programs.

SURF's Education and Outreach team reached nearly 20,000 K-12 students, partnered with several entities to offer teacher professional development to educators across the state, and continued to build new programs based on the science at SURF. Public outreach programming brought nearly 3,500 people to SURF events and presentations. And all of this is possible because of you, our donors.

In 2022, we increased the number of Foundation Board members and hired Michelle Kane as our new SURF Foundation Director. Michelle comes to SURF from South Dakota CEO and will begin her new duties in January 2023.

The new year offers many opportunities to support education and outreach at SURF. Construction on the garden is set to begin in the spring and plans to launch The Institute for Underground Science at SURF are underway. We'll tell you more about that in the coming year.

We are so very thankful for your generous support over the past year and look forward to the many opportunities of 2023.

Julie Olson, SURF Foundation Chair

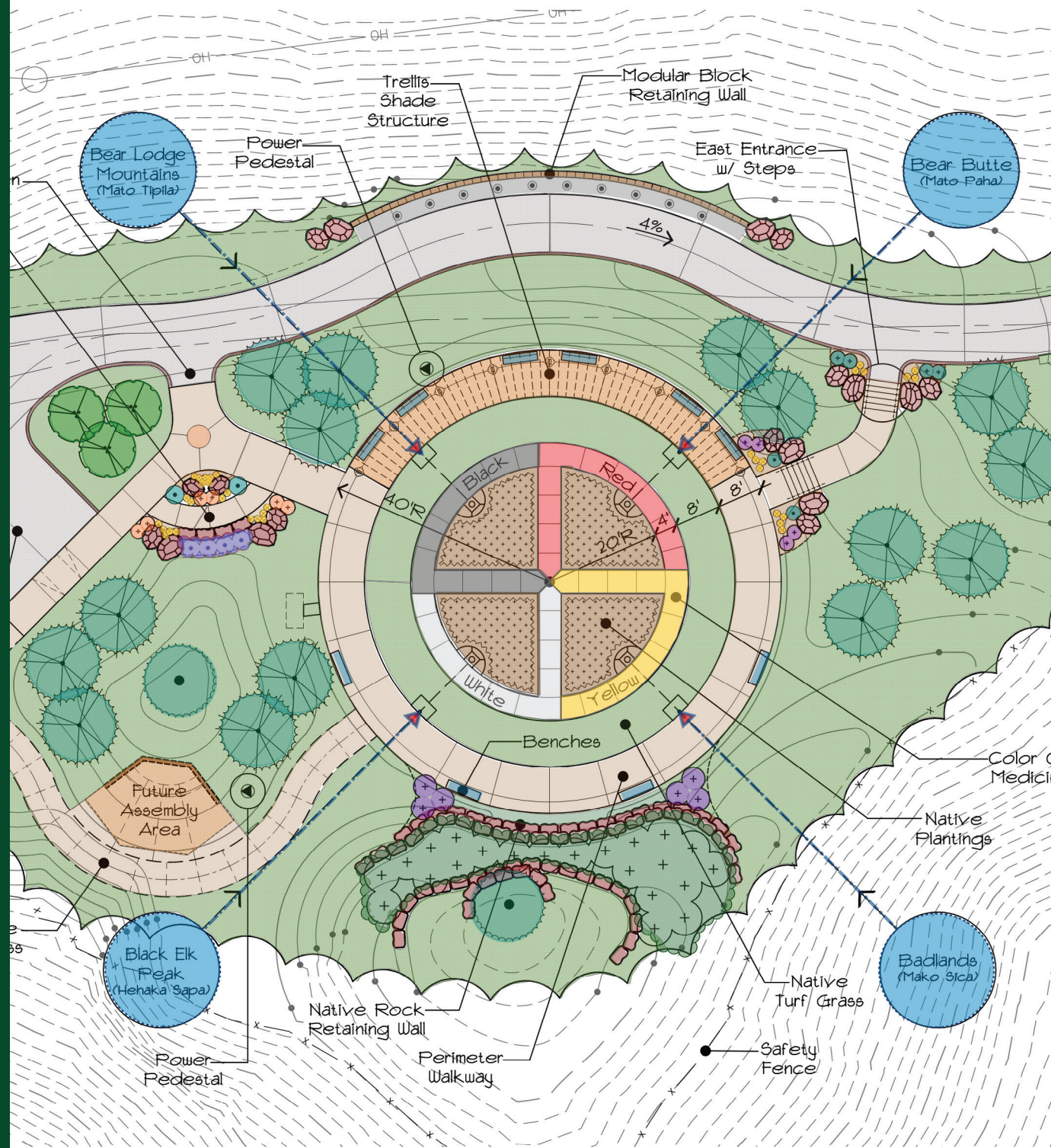
Čangléška Wakhán

Čangléška Wakhán, the ethnobotanical garden at SURF, is a demonstration of our capacity to collaborate with our communities, colleagues, visitors, researchers, and other stakeholders. Guided by the SURF Cultural Advisory Committee, the Čangléška Wakhán Working Group, and Indigenous elders from the region, Čangléška Wakhán is our effort to explore the connections between science, art, culture, and humanistic inquiry.

Construction of the garden will begin in spring 2023 with programming set to begin in 2024.

Programming may include:

- Public speaker series focusing on culture, art, history, and science
- K-12 outreach activities
- Trolley tours from the Visitor Center



Key area of Impact

Inspiring Future Scientists

Paid summer internships awarded to students.

7



8

Students participated in the Davis-Bahcall Scholars Program.

Pre-service educators and undergraduate students participated in professional development.

439



637

K-12 educators participated in teacher professional development programming in South Dakota.

19,709

This year, the Education and Outreach team set a new record, reaching a total of 19,709 K-12 students.



Key Area of Impact

Beyond the Classroom into the Community



**SURF public
outreach
events and
presentations**

3,443
Attendees

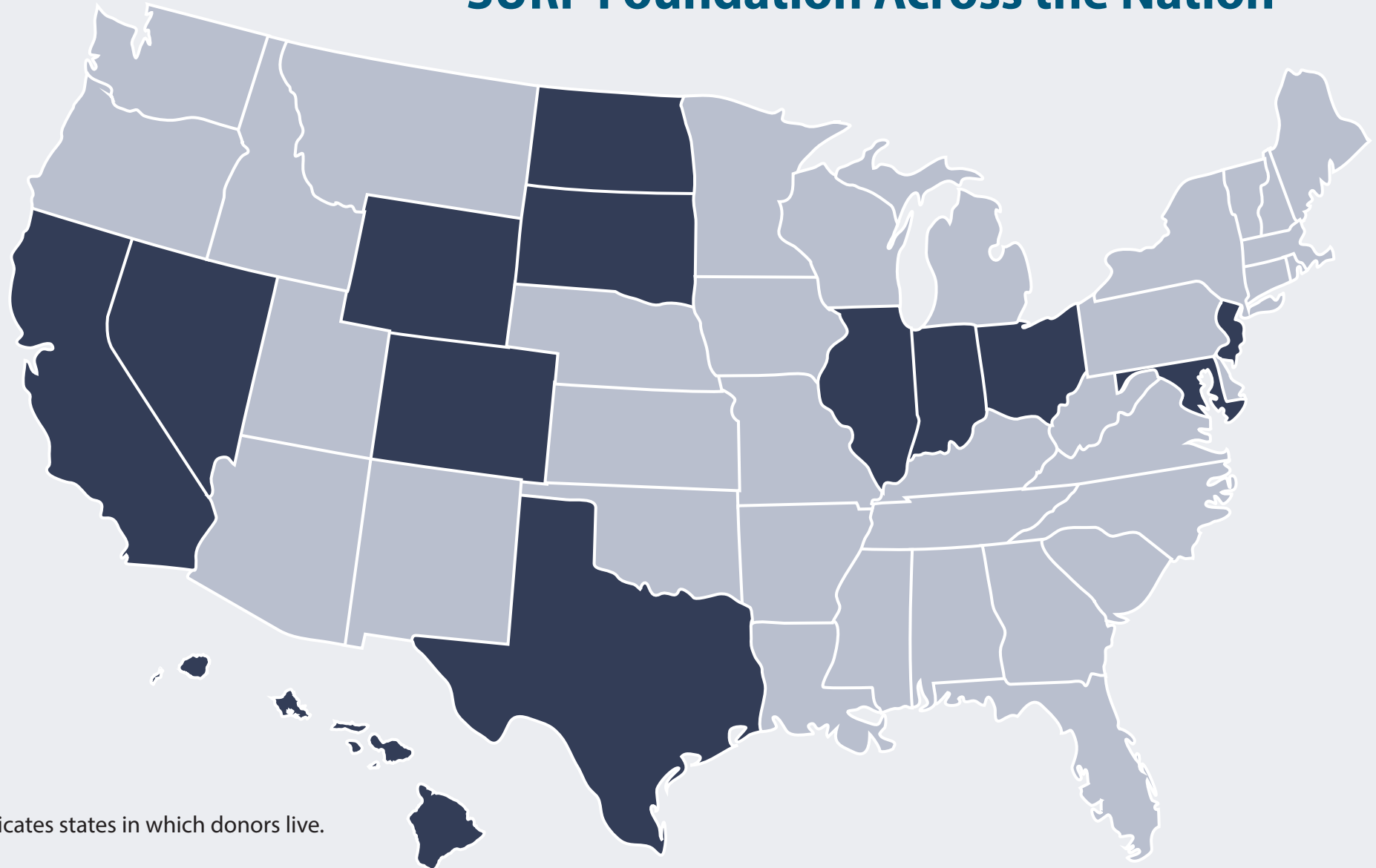
Statement of Financial Position


As of December 31, 2022

	TOTAL
ASSETS	
Current Assets	
Bank Accounts	
First Interstate Checking	564,910.84
Total Bank Accounts	\$564,910.84
Accounts Receivable	
Accounts Receivable (A/R)	0.00
Total Accounts Receivable	\$0.00
Total Current Assets	\$564,910.84
Other Assets	
Contributions Receivable	45,000.00
Total Other Assets	\$45,000.00
TOTAL ASSETS	\$609,910.84
LIABILITIES AND EQUITY	
Liabilities	
Total Liabilities	
Equity	
Restricted	
Davis-Bachall	45,000.00
Garden	520,521.04
Interns	27,667.92
Public Outreach	1,500.00
STEM Education	4,335.56
Visitor Center	3,247.07
Total Restricted	602,271.59
Retained Earnings	-141,464.55
Unrestricted	7,639.25
Net Revenue	141,464.55
Total Equity	\$609,910.84
TOTAL LIABILITIES AND EQUITY	\$609,910.84

Where are our donors?

SURF Foundation Across the Nation



 Indicates states in which donors live.

Ways to give

Partners of the SURF Foundation

Monthly and recurring gifts are the driving force in supporting the advancement of world-class science and inspiring learning across generations.

Individual Gift

Gifts to the SURF Foundation Endowment Fund, which is like an interest-earning savings account, are invested and the principle is untouched to maintain a strong financial base for future needs.

Planned Giving

Planned giving provides an opportunity for you to ensure an investment in the future of SURF and leave a legacy that will impact future generations.

Corporate Partnerships

We are proud to partner with organizations and businesses that share our vision to support STEM initiatives.

We are thankful for you!



Sanford Underground
Research Facility

Foundation

630 East Summit St. Lead, SD 57754

605-571-2303

www.sanfordlab.org/donate