

Sanford Underground
Research Facility
Foundation

2021 Annual Report

Supporting the advancement of
world-class science and inspiring
learning across generations.

The Sanford Underground Research Facility's (SURF) primary mission is "to advance world-class science and inspire learning across generations."

To carry out that mission, SURF creates and delivers educational programming that encourages students to ask questions and find solutions. We host events designed to generate community interest in scientific discovery and invites collaboration among researchers.

As the philanthropic arm of SURF, the Foundation builds strong relationships around the globe and opens doors for public and corporate contributions to support the mission.

Staff

Staci Miller

SURF Foundation Director
smiller@sanfordlab.org

Mike Headley

SDSTA Executive Director
mheadley@sanfordlab.org

Natasha Wheeler

SDSTA/SURF Foundation
Administrative Assistant
nwheeler@sanfordlab.org

Board of Directors

Dana Dykhouse

Chairperson
Sioux Falls, SD

Fred Romkema

Vice Chairperson
Spearfish, SD

Beth Massa

Secretary/Treasurer
Rapid City, SD

Casey Peterson

Immediate Past Chair, Ex-Officio
Rapid City, SD

Linn Evans

Rapid City, SD

Chris Fall

Arlington, VA

Aurelia S. Giacometto

Washington, DC

Julie Olson

Spearfish, SD

Barbara Szczerbinska

Corpus Christi, TX

Bob Wilson

Fort Collins, CO



Our community's collaborative spirit of giving has never been stronger. Every year, the passion of our donors grows, paving the way for us to transform and enhance our formal and informal education efforts. We are especially excited to see the strong support for the new ethnobotanical garden called *Cangleska Wakan*, which translates to Sacred Circle Garden in Lakota.

SURF's commitment to the Sacred Circle Garden is just one way we recognize the diversity of the people who have and continue to call this place home. Featuring a Lakota medicine wheel at its center, the Sacred Circle Garden will

include native plants and will incorporate tributes to four sacred sites: Bear Butte, the Badlands, Black Elk Peak and Bear Lodge. Our purpose in building the Sacred Circle Garden focuses on respecting, protecting and understanding the rich history and indigenous cultures of the Black Hills.

As you read through the SURF Foundation annual report, I hope you feel exhilarated by the many momentous projects and programs made possible by you, our donors. Consider the second-grade girl who learned about new career paths when SURF's Education and Outreach team made a visit to her school. Today, she dreams of being

"A lot of energy and effort has gone into highlighting SURF and what it means for the future. The garden ties it to the past. We can't reach out to the future without knowing our past and the garden is a perfect location for that. We expect people from around the world to visit SURF and this will give them a chance to not only create the future but also to remember our past."

—Dykhouse, SURF Foundation Chair.

an underground scientist, something she had never imagined before. When you contribute to our education programs, you make it possible for children to see themselves as scientists and engineers.

We are working to build strong relationships that open doors for public and corporate

contributions, while providing the absolute best in donor experience. You decide how and when to give, and we'll help you transform your wishes into action.

We are thankful for your generous support over the past year and look forward to the many opportunities of 2022.

—Staci Miller



Protect.

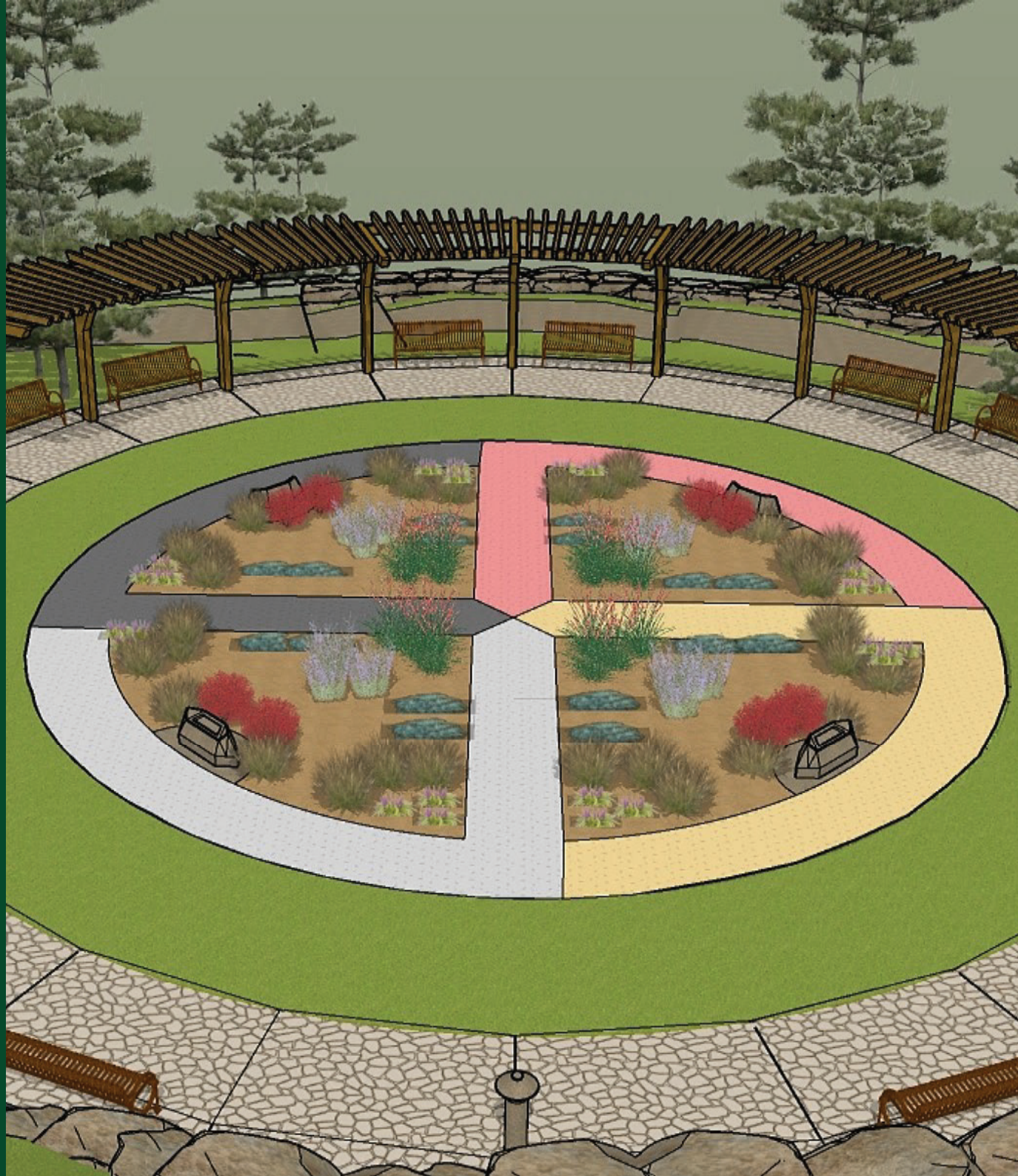
Respect.

Understand.

Cangleska Wakan represents SURF's core values, environmental practices and future aspirations. The garden will offer a space for learning across the generations, connecting our communities, quiet reflection and cultivating cultural awareness.

Uses of the garden may include:

- Field trips for K-12 students
- Star knowledge and astronomy nights
- Cultural ceremonies, including graduations
- Guided tours from the Visitor Center
- Presentations on history and cultural awareness
- Public activities on ethnobotany and nature



Key area of Impact

Inspiring Future Scientists

Paid summer internships awarded to students, including the first Jack Headley intern.

9



11

Students participated in the Davis-Bahcall Scholars Program.

Black Hills State University education students took part in teacher professional development programming.

104



779

K-12 educators received support across 76 school districts, primarily in South Dakota.

13,045

This year, the Education and Outreach team set a new record, reaching a total of 13,045 K-12 students.

"I took your first course 2 years ago. I can tell you that course changed how I teach! Taking this one has helped me realize how far I have come with the material that was presented and helped me to remember pieces that I have forgotten and how I can do a better job across the board. Thank you for putting this together and giving us the opportunity to take this. All teachers need to take this course so that we can all be the best for our students!"

—SD Elementary School Teacher



Key Area of Impact

Beyond the Classroom into the Community



11

SURF public
outreach
events, primarily
virtual.

2,896

Attendees

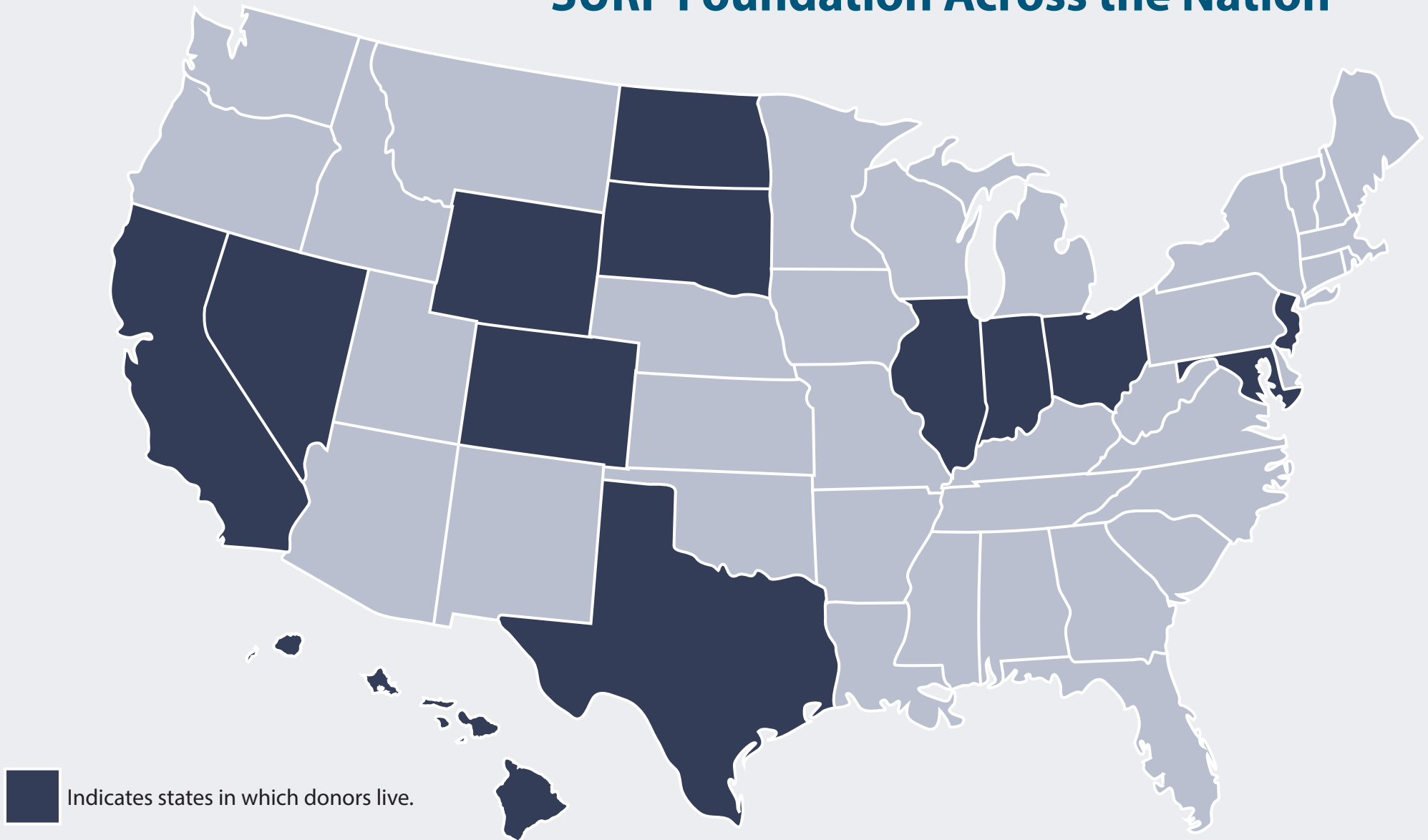
Statement of Financial Position

As of December 31, 2021

	Total
ASSETS	
Current Assets	
Bank Accounts	
First Interstate Checking	370,796.93
Total Bank Accounts	\$370,796.93
Accounts Receivable	
Accounts Receivable (A/R)	0.00
Total Accounts Receivable	\$0.00
Total Current Assets	\$370,796.93
Other Assets	
Contributions Receivable	60,000.00
Total Other Assets	\$60,000.00
TOTAL ASSETS	\$430,796.93
LIABILITIES AND EQUITY	
Liabilities	
Total Liabilities	
Equity	
Restricted	
Davis-Bachall	75,000.00
Garden	308,747.41
Interns	17,919.33
Public Outreach	16,750.00
STEM Education	250.00
Total Restricted	\$418,666.74
Retained Earnings	-45,936.51
Unrestricted	12,130.19
Net Revenue	45,936.51
Total Equity	\$430,796.93
TOTAL LIABILITIES AND EQUITY	\$430,796.93

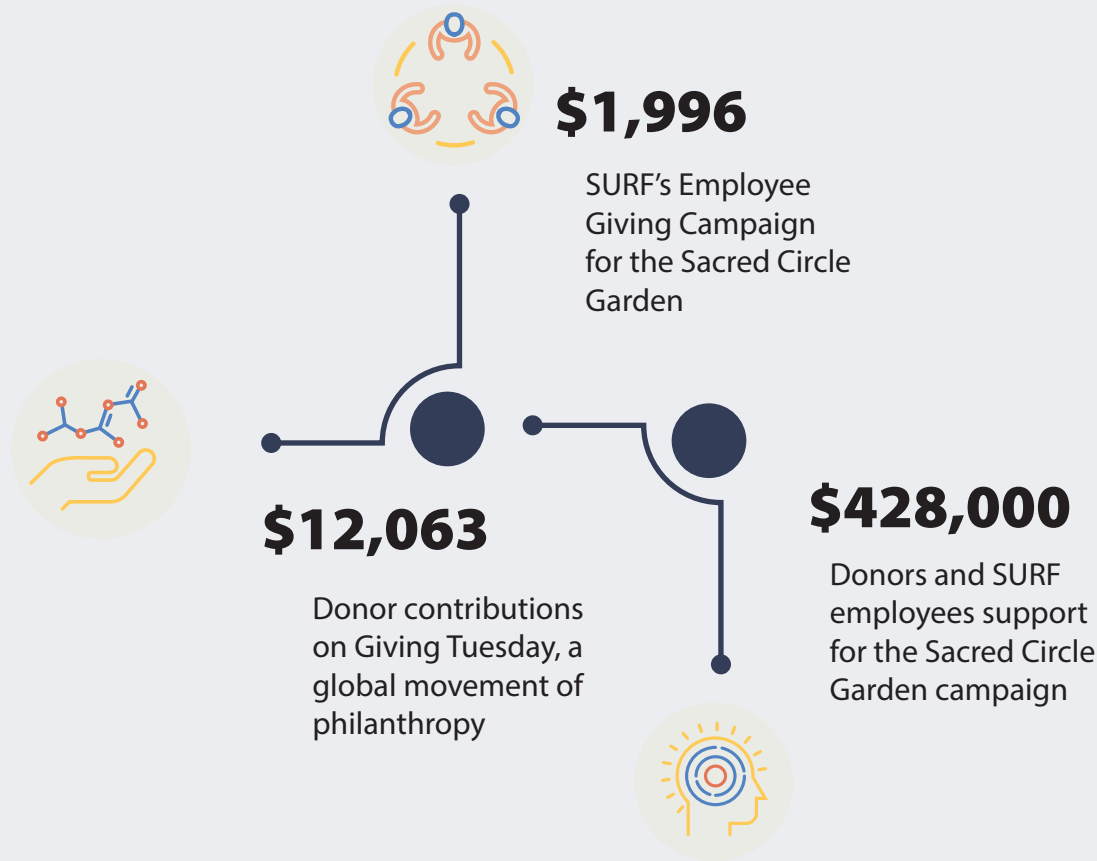
Where are our donors?

SURF Foundation Across the Nation



Celebrating Generosity

Campaign Highlights 2021

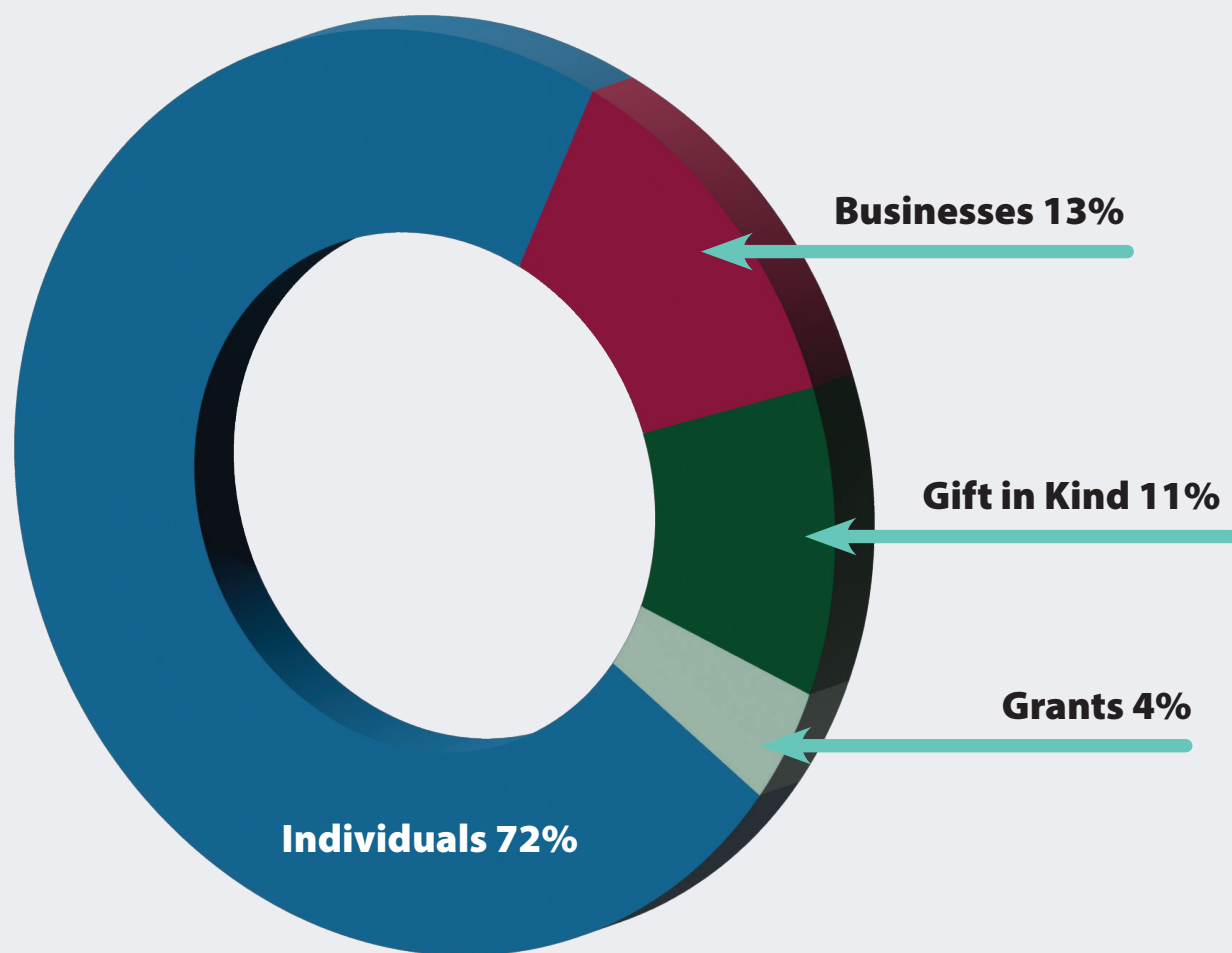


“The Tuesday after Thanksgiving is a day when people from everywhere come together to do something to support the causes in communities about which they are passionate. The world-class science and education happening at Sanford Underground Research Facility is a great cause.”

—Chris Fall, SURF Foundation board member

Celebrating Generosity

2021 Donation Summary



Ways to give

Partners of the SURF Foundation

Monthly and recurring gifts are the driving force in supporting the advancement of world-class science and inspiring learning across generations.

Individual Gift

Gifts to the SURF Foundation Endowment Fund, which is like an interest-earning savings account, are invested and the principle is untouched to maintain a strong financial base for future needs.

Planned Giving

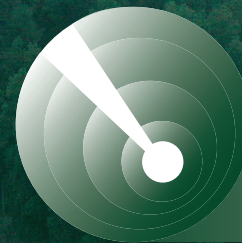
Planned giving provides an opportunity for you to ensure an investment in the future of SURF and leave a legacy that will impact future generations.

Corporate Partnerships

We are proud to partner with organizations and businesses that share our vision to support STEM initiatives.

We are thankful for you!

**Join us for an evening of gratitude
and celebration at our annual
donor appreciation event.
February 24, 2022, at 5:00 p.m. MST.
[Click here to register.](#)**



**Sanford Underground
Research Facility
Foundation**

630 East Summit St. Lead, SD 57754
605-571-2303
smiller@sanfordlab.org
www.sanfordlab.org/donate